



Running LibertyNET as an NT Service

Overview

Typically, when an application runs on an NT computer, the user starts it after logon. Some applications might start during the logon process if they are listed in the Startup folder. But a service program always starts independently of the logon: NT starts its service programs as part of the startup process, even if no one logs on to the computer. In the case of a computer that functions as a server, service programs must begin automatically during the startup process, because no one logs on to servers except to perform systems administration tasks (and sometimes an administrator will perform these tasks remotely).

LibertyNET can be run as a NT Service, which is a background process launched by the Service Control Manager manually or automatically. One typical use would be to set up NETCommunicate as an NT Service. When you have a dedicated computer running LibertyNET's NETCommunicate web server, it is beneficial to run LibertyNET as an NT service. This allows the Windows server to be logged out, while LibertyNET's web server remains operational.

Benefits

In many cases, the operating system needs a way to run background processes independently of anyone using the console. Basically, any task that you want to run in the background, independently of the machine's console, is a good candidate for implementation as a service. This is not to say that services must be totally independent of the console. They can have user interfaces. They can also be manually started and shut down by the user when desired. Usually however, services are background applications that run all the time, and are thus activated automatically by NT at system bootup, and shut down only at system shutdown.

Security

With LibertyNET running as a service, you can log out of your server while LibertyNET continues to run—or never log in at all. This makes sure that no one but an authorized user can log in and use the server.

Reliability

Using the automatic start feature of NT services, if your server crashes, it must only be restarted to resume operation of LibertyNET.

Compatibility

LibertyNET's NT service is supported in Windows NT/2000/XP.

* LibertyNET, NETCommunicate, and Liberty IMS logo are trademarks of Liberty IMS.

Features

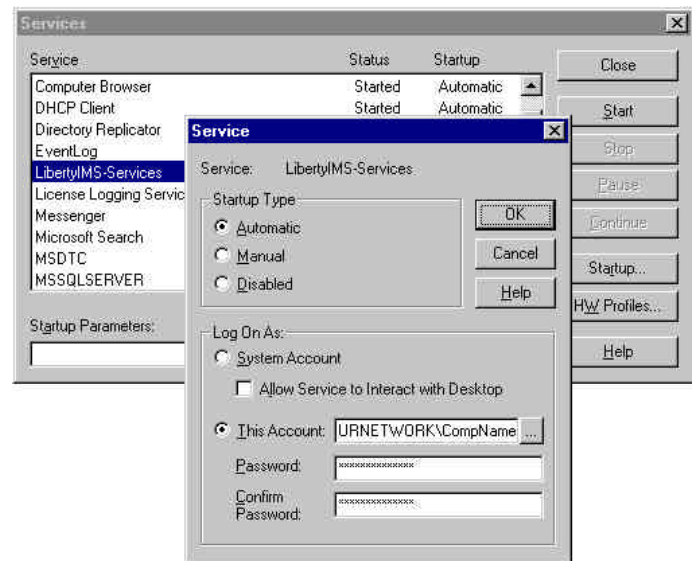
Custom Login

Specify the login user and LibertyNET Application for the service to run. Your web users are not limited to the specified LibertyNET application, as NETCommunicate supports login to multiple applications.

Manual/Automatic/Disabled Start

NT services may be run manually, automatically upon server startup, or disabled, giving you full control over the availability of your LibertyNET server.

- Automatic - the service starts automatically when the operating system loads.
- Manual - the service isn't initially started but can be started manually by the user.
- Disabled - the service is installed but is disabled. Disabled services can be started manually by changing the startup mode.



Summary

Increase the security, performance, and reliability of the NETCommunicate web server by running it as an NT service on a dedicated Windows server. Your users will never know the difference, while you rest assured that no one tampers with your LibertyNET web server.



Liberty Information Management Solutions, The Liberty Building
3158 Red Hill Avenue, Suite 100, Costa Mesa, CA 92626
714.751.6900 | Fax 714.432.5335 | www.libertyims.com

Specifications subject to change without notice. ?? Copyright 2002 Liberty IMS