

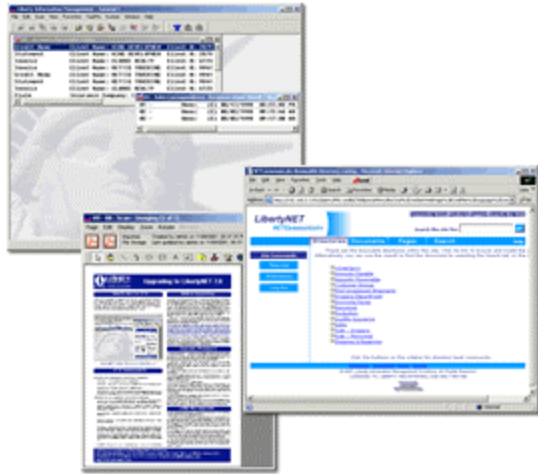


# LibertyNET-SAP Integration

## LibertyNET

LibertyNET is a software product that is highly customizable and addresses the needs of capture, complete life cycle management, storage, retrieval, integration and web enabling for disparate types and multiple sources of an organization's unstructured information assets.

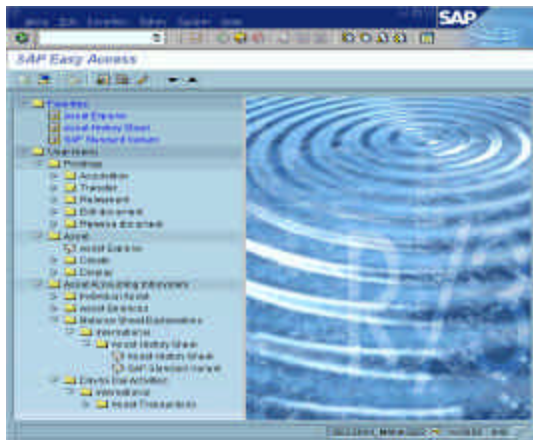
## LibertyNET 7.0



LibertyNET Main Window, Page Viewer and Web Interface.

## SAP

SAP is an acronym for Systems, Applications and Products. SAP is a global provider of integrated standard software for eBusiness solutions. Use of an SAP application makes it possible to track and manage, in real-time, sales, production, finance accounting and human resources in an enterprise. It is an Enterprise Information/Resource Planning (ERP) System.



## Communication via Integration



## Integration Overview

LibertyNET offers the application linking interface - Message Driver, designed to quickly and easily link external applications such as SAP.

Message Driver is a set of published services that LibertyNET can perform. Via the Message Driver, LibertyNET can integrate with SAP to access the e-business software suite interface. This integration requires no user interface changes in the native SAP application.

## Integration Strategy

The strategy of the integration is to utilize the Message Driver commands to issue the API calls from SAP. There are two methods that can be used. Both call LibertyNET message driver.

1. Use Automatic Clipboard operations and a taskbar icon to call. The process involves a user highlighting text in SAP and have it automatically copied to the clipboard. The user can then click the taskbar icon to call LibertyNET.

(i) Setup the SAP GUI to automatically copy a selected text to the clipboard. This is a menu setting in the SAP GUI.  
(ii) Create a taskbar icon which calls LibertyNET Message Driver.

2. Use ABAP to call.

Use the ABAP program in the SAP software to call LibertyNET Message Driver from ABAP code.

This implements the same as the Method #1, using parameters from within SAP tables instead.

## Integration Summary

LibertyNET's SAP Integration is one more of the powerful features in its NETDeveloper suite, which is a rapid application development environment that allows an individual with the skill set of a network administrator to design, install, maintain and extend the capabilities of the LibertyNET software solution. The setup requires no complex programming skills and no major modification in the SAP application. A seamless integrated LibertyNET/SAP system can be developed with a few mouse clicks.

\* LibertyNET, NETCommunicate, and Liberty IMS logo are trademarks of Liberty IMS. SAP logo is trademark of SAP.



Liberty Information Management Solutions, The Liberty Building  
3158 Red Hill Avenue, Suite 100, Costa Mesa, CA 92626  
714.751.6900 | Fax 714.432.5335 | [www.libertyims.com](http://www.libertyims.com)

Specifications subject to change without notice. ?? Copyright 2002 Liberty IMS